

Triangular grips ergonomic

Item description/product images



Description

Material:

Hard components fibreglass reinforced plastic.

Soft components thermoplastic elastomer.

Bush or screw, steel grade 5.8 or stainless steel 1.4305.

Version:

Steel trivalent blue passivated.

Stainless steel, bright.

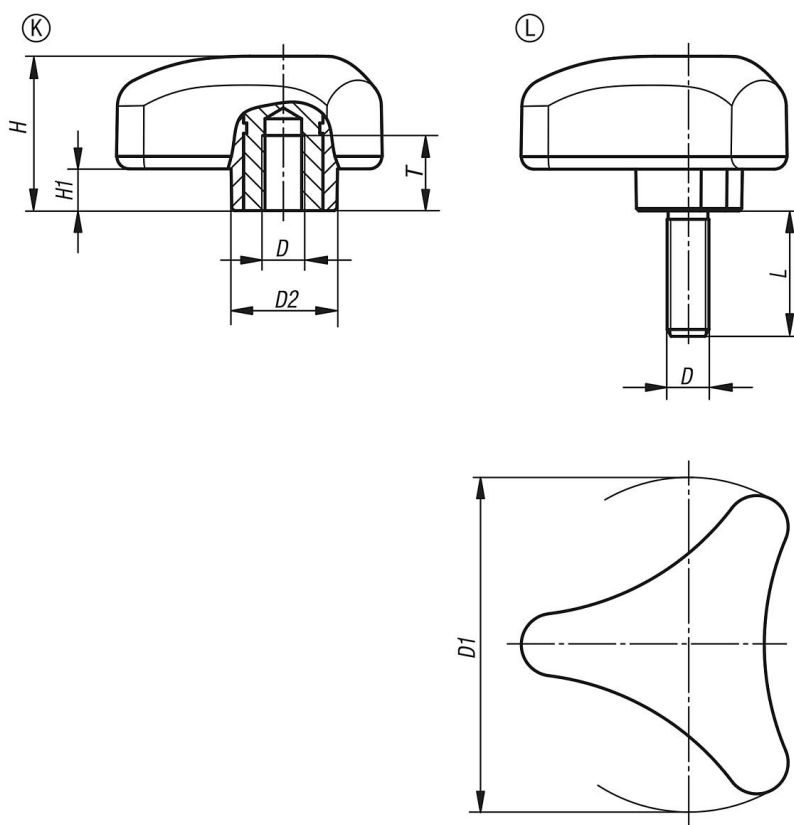
Note:

The colour combination black grey RAL 7021 (hard components) and black grey RAL 7021 (soft components) are supplied as standard.

On request:

Other versions.

Drawings



Overview of items