

Ball transfer units heavy duty suitable for outdoor use

Item description/product images



Description

Material:

Balls stainless steel 1.4021.

Housing stainless steel 1.4301.

Version:

Bright.

Note:

Solid steel ball transfer units are designed for long life by impact loading.

All units are supplied with solid steel housings and hardened surfaces.

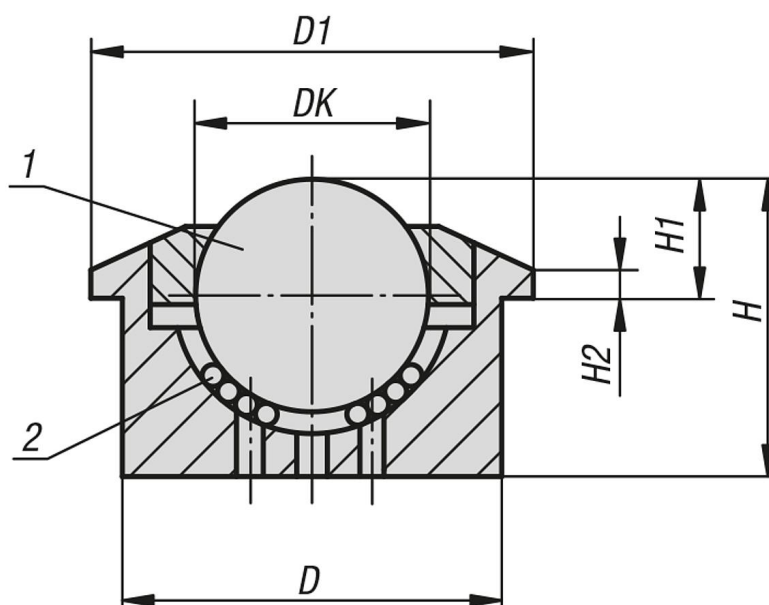
The large number of self-cleaning apertures give the ball transfer units a high self-cleaning efficiency making them suitable for outdoor use.

Drawing reference:

1) load ball

2) bearing balls

Drawings



Overview of items

Ball transfer units, heavy duty, for outdoor use

| Order No. | DK | D1 | D | H | H1 | H2 | Load rating C (N) |
|-----------|------|----|----------|------|----------|-----|-------------------|
| K1325.330 | 30 | 55 | 45±0,080 | 36,8 | 13,8±0,2 | 3,4 | 2000 |
| K1325.345 | 44,5 | 75 | 62±0,1 | 53,5 | 19 | 3,8 | 3000 |