

Protective rubber caps for shallow pot magnets

Item description/product images



Description

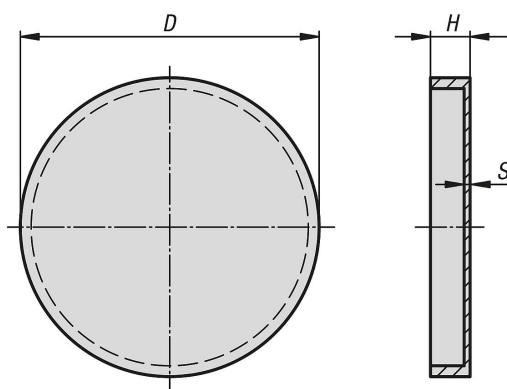
Material:
Synthetic rubber.

Version:
black.

Note:
For protecting sensitive surfaces. The rubber protective caps are slipped over the magnetic surfaces. The shear force with which the magnet can be displaced is doubled and achieves almost the original attractive force of the magnet.

Temperature range:
max. 60°C.

Drawings



Overview of items

Protective rubber caps for shallow pot magnets

Order No.	D	H	S
K0561.50	52	6	0,5
K0561.63	65	8	0,5
K0561.80	83	11	0,5