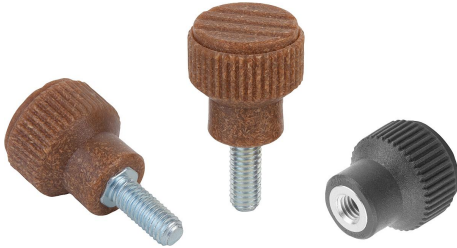


## Knurled knobs biopolymer

### Item description/product images



### Description

#### Material:

Biopolymer, beech.

Bush or threaded pin steel 5.8

#### Version:

Steel blue passivated.

Natural beech with beech fibres or coloured black grey.

#### Advantages:

This biopolymer is manufactured entirely from renewable raw materials (oil free).

Conservation of finite fossil resources.

The wood fibres originate 100% from local, sustainably managed forests in Germany.

#### Features:

Excellent mechanical stability (certified with a minimum of 2x safety factor).

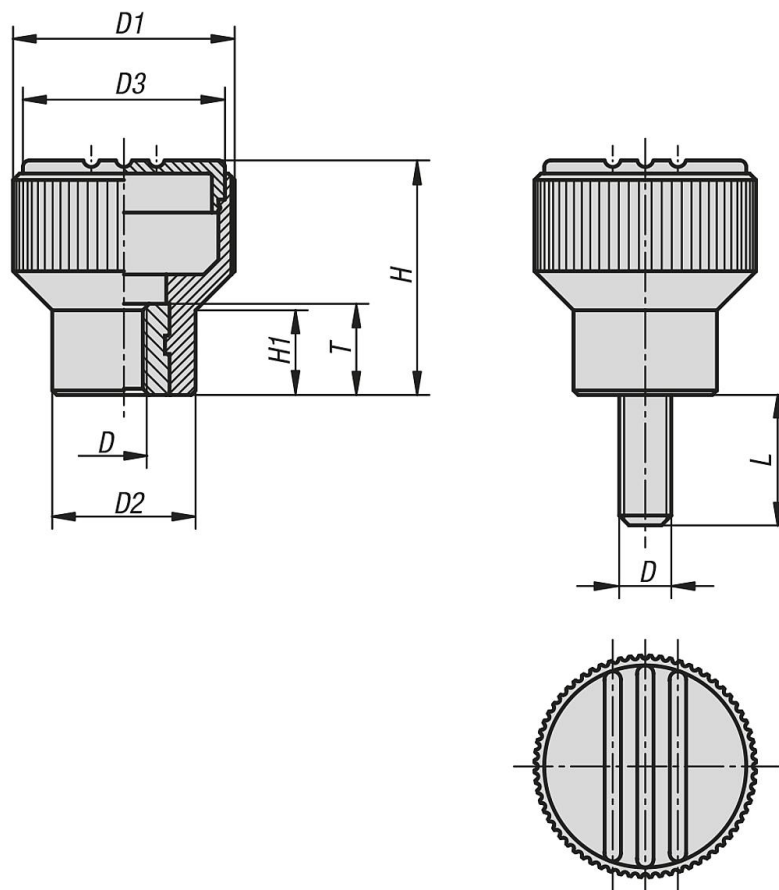
Biopolymer is suitable for recycling (comparable to thermoplastics).

Suitable for outdoor use (not biodegradable).

Excellent resistance to strong acids and lyes.

Short-term resistance to alcohol, fuel, mineral oil and grease.

### Drawings



## Knurled knobs biopolymer

### Overview of items

#### Knurled knobs biopolymer internal thread

Order No.	Main colour	D	D1	D2	D3	H	H1	L	T
K0247.10104143	natural beech	M4	21	14	19	22	8	-	10
K0247.10105143	natural beech	M5	21	14	19	22	8	-	10
K0247.10106143	natural beech	M6	21	14	19	22	8	-	10
K0247.1010490	black grey RAL 7021	M4	21	14	19	22	8	-	10
K0247.1010590	black grey RAL 7021	M5	21	14	19	22	8	-	10
K0247.1010690	black grey RAL 7021	M6	21	14	19	22	8	-	10
K0247.10105143X10	natural beech	M5	21	14	19	22	8	10	-
K0247.10106143X15	natural beech	M6	21	14	19	22	8	15	-
K0247.1010590X10	black grey RAL 7021	M5	21	14	19	22	8	10	-
K0247.1010690X15	black grey RAL 7021	M6	21	14	19	22	8	15	-