

## Tube clamps base plastic

### Item description/product images



### Description

#### Material:

Thermoplastic.

DIN 7984 screws and DIN 985 nuts steel.

#### Version:

Black.

Screws and nuts electro zinc-plated.

#### Note:

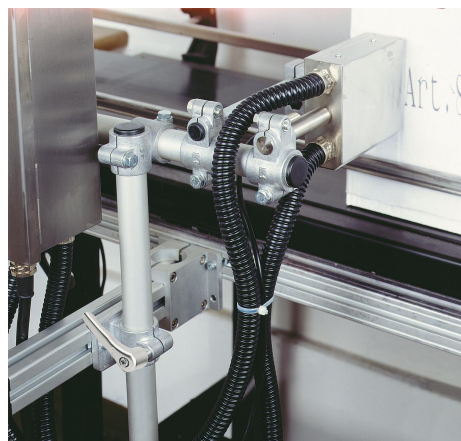
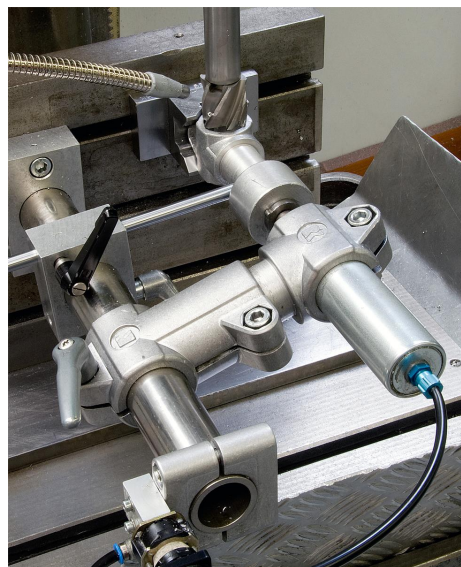
These base clamps are for 30 mm square tubes. Use reducer sleeves K0491 if smaller tubes are to be clamped or a conversion from square to round tubes is required.

#### On request:

Plastic levers for locking.

#### Accessory:

- Reducer sleeves K0491
- Round and square tubes K0493

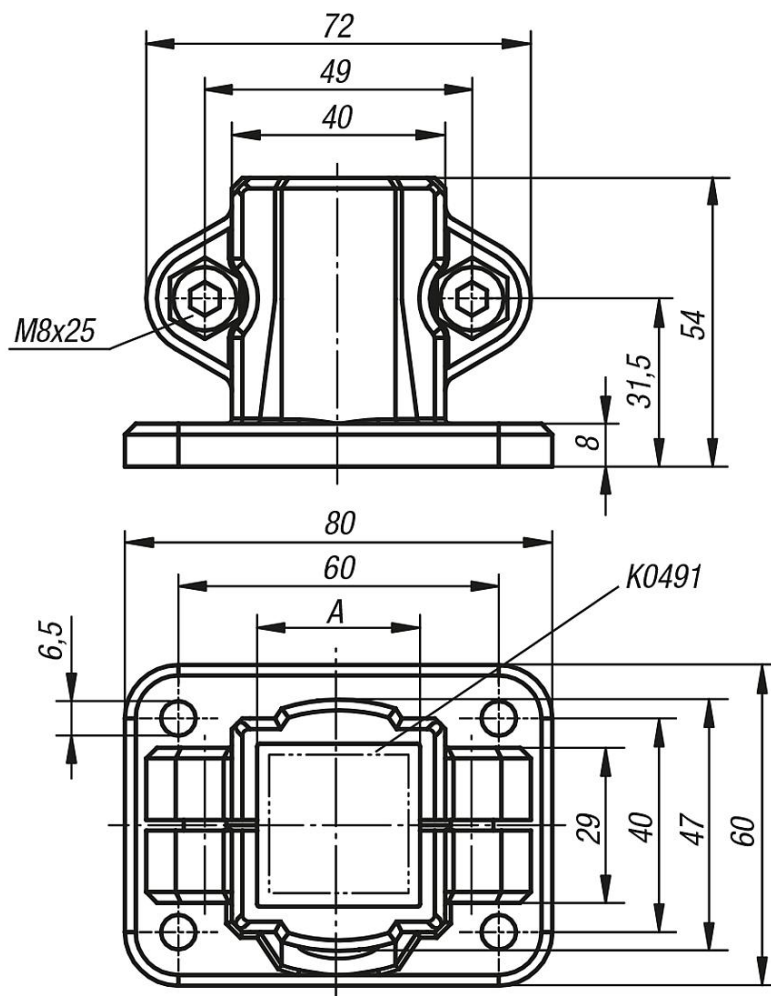


## Tube clamps base plastic

### Item description/product images



### Drawings



### Overview of items

Tube clamps base plastic

Overview of items

Tube clamps base, plastic

Order No.	A
K0478.30	30