

## Tube clamps cross plastic

### Item description/product images



### Description

**Material:**

Thermoplastic.

DIN 7984 screws and DIN 985 nuts steel.

**Version:**

Black.

Screws and nuts electro zinc-plated.

**Note:**

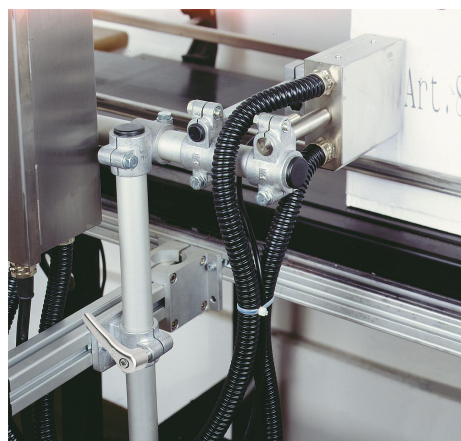
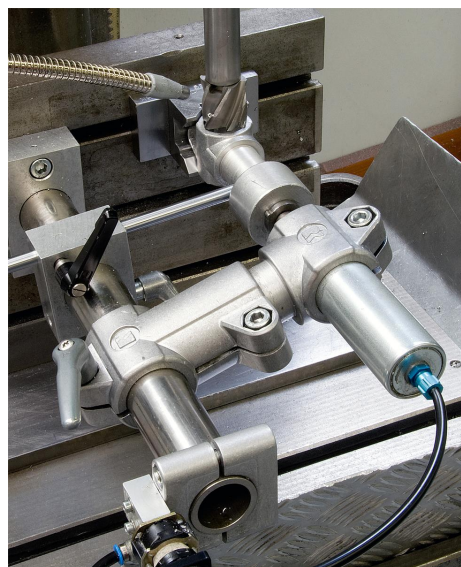
These cross clamps are for 30 mm square tubes. Use reducer sleeves K0491 if smaller tubes are to be clamped or a conversion from square to round tubes is required.

**On request:**

Plastic levers for locking.

**Accessory:**

- Reducer sleeves K0491
- Round and square tubes K0493

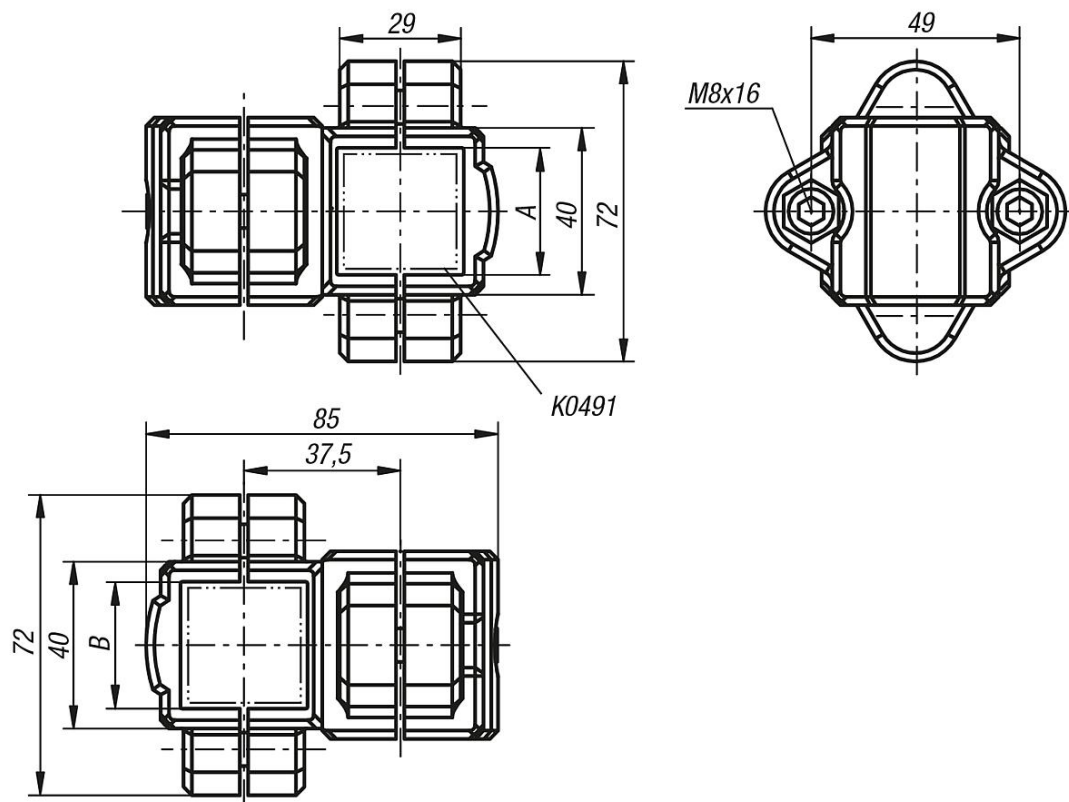


## Tube clamps cross plastic

### Item description/product images



### Drawings



### Overview of items

#### Tube clamps cross, plastic

Order No.	A	B
K0473.3030	30	30