

Knurled knobs

Item description/product images



Description

Product description:

NOVO grip knurled knobs provide a precise and reproducible position setting, optimal reading of the perfectly situated graduations and are easily fastened permanently to the shaft with the integrated set screw.

Material:

Thermoplastic, black grey.
Bush steel.

Version:

Bush blue passivated

Note:

Available without graduations, with one scale line or with 20 graduations and 10 digits.

Δ Add the desired cap colour here. No colour code is required for black grey caps.

On request:

Special graduations.

Drawing reference:

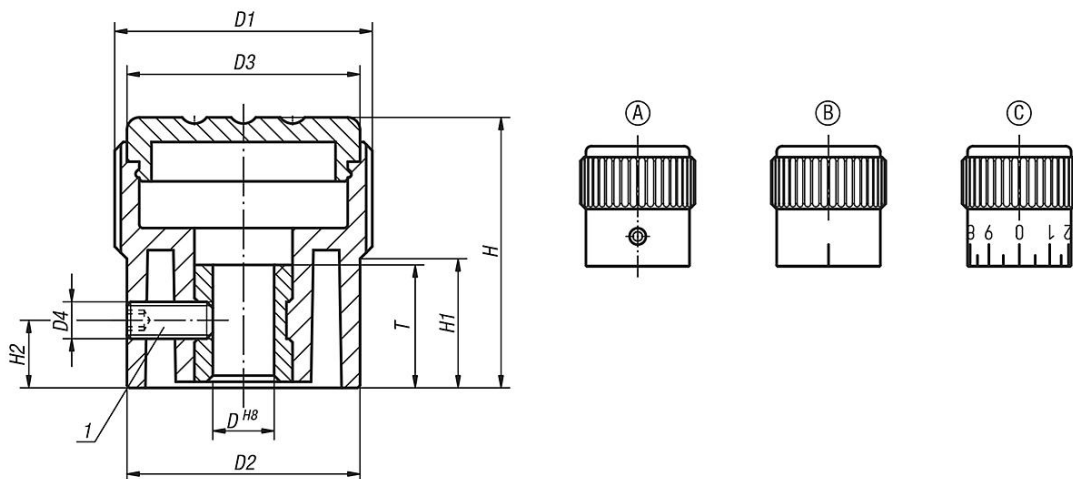
Form A: without graduations

Form B: with one scale line

Form C: with standard graduations

1) Set screw for locking (by Form C between numbers 5 and 6)

Drawings



Overview of items

Knurled knobs

Order No.	Form	Colour Cap	D	D1	D2	D3	D4	H	H1	H2	T
K0248.1105	A	black grey RAL 7021	5	21	19	19	M3	22	10,5	5	10
K0248.11055	A	light grey RAL 7035	5	21	19	19	M3	22	10,5	5	10

Overview of items

Order No.	Form	Colour Cap	D	D1	D2	D3	D4	H	H1	H2	T
K0248.11056	A	traffic red RAL 3020	5	21	19	19	M3	22	10,5	5	10
K0248.11057	A	rape yellow RAL 1021	5	21	19	19	M3	22	10,5	5	10
K0248.1206	A	black grey RAL 7021	6	26	23	23	M3	26	12	6	10
K0248.12065	A	light grey RAL 7035	6	26	23	23	M3	26	12	6	10
K0248.12066	A	traffic red RAL 3020	6	26	23	23	M3	26	12	6	10
K0248.12067	A	rape yellow RAL 1021	6	26	23	23	M3	26	12	6	10
K0248.1308	A	black grey RAL 7021	8	34	31	31	M4	36	17,5	7	14
K0248.13085	A	light grey RAL 7035	8	34	31	31	M4	36	17,5	7	14
K0248.13086	A	traffic red RAL 3020	8	34	31	31	M4	36	17,5	7	14
K0248.13087	A	rape yellow RAL 1021	8	34	31	31	M4	36	17,5	7	14
K0248.2105	B	black grey RAL 7021	5	21	19	19	M3	22	10,5	5	10
K0248.21055	B	light grey RAL 7035	5	21	19	19	M3	22	10,5	5	10
K0248.21056	B	traffic red RAL 3020	5	21	19	19	M3	22	10,5	5	10
K0248.21057	B	rape yellow RAL 1021	5	21	19	19	M3	22	10,5	5	10
K0248.2206	B	black grey RAL 7021	6	26	23	23	M3	26	12	6	10
K0248.22065	B	light grey RAL 7035	6	26	23	23	M3	26	12	6	10
K0248.22066	B	traffic red RAL 3020	6	26	23	23	M3	26	12	6	10
K0248.22067	B	rape yellow RAL 1021	6	26	23	23	M3	26	12	6	10
K0248.2308	B	black grey RAL 7021	8	34	31	31	M4	36	17,5	7	14
K0248.23085	B	light grey RAL 7035	8	34	31	31	M4	36	17,5	7	14
K0248.23086	B	traffic red RAL 3020	8	34	31	31	M4	36	17,5	7	14
K0248.23087	B	rape yellow RAL 1021	8	34	31	31	M4	36	17,5	7	14
K0248.3105	C	black grey RAL 7021	5	21	19	19	M3	22	10,5	5	10
K0248.31055	C	light grey RAL 7035	5	21	19	19	M3	22	10,5	5	10
K0248.31056	C	traffic red RAL 3020	5	21	19	19	M3	22	10,5	5	10
K0248.31057	C	rape yellow RAL 1021	5	21	19	19	M3	22	10,5	5	10
K0248.3206	C	black grey RAL 7021	6	26	23	23	M3	26	12	6	10
K0248.32065	C	light grey RAL 7035	6	26	23	23	M3	26	12	6	10
K0248.32066	C	traffic red RAL 3020	6	26	23	23	M3	26	12	6	10
K0248.32067	C	rape yellow RAL 1021	6	26	23	23	M3	26	12	6	10
K0248.3308	C	black grey RAL 7021	8	34	31	31	M4	36	17,5	7	14
K0248.33085	C	light grey RAL 7035	8	34	31	31	M4	36	17,5	7	14
K0248.33086	C	traffic red RAL 3020	8	34	31	31	M4	36	17,5	7	14
K0248.33087	C	rape yellow RAL 1021	8	34	31	31	M4	36	17,5	7	14