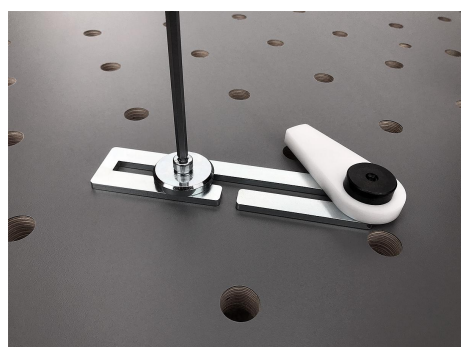
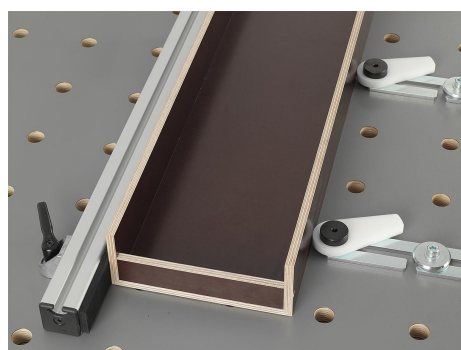
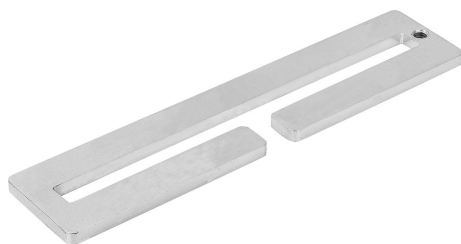


Plate, steel open

Item description/product images



Description

Material:

Steel.

Version:

Galvanised and trivalent blue passivated.

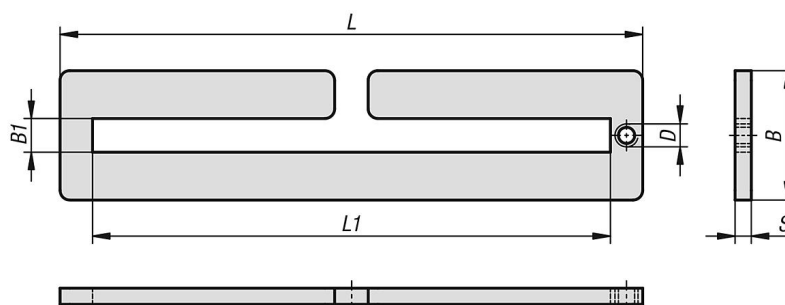
Note:

Plates can be used in combination with a pivot bearing and cam clamp for indirect clamping. The plates are fastened to grid hole tables using clamping pins and washers. They can also be clamped to machine slot tables by combining with eccentric clamp modules.

Advantages:

Flexible movement and positioning.
infinitely adjustable

Drawings



Overview of items

Plates steel, open

Order No.	B	B1	D	L	L1	S
K1508.0180X40	40	10,4	M6	180	160	5