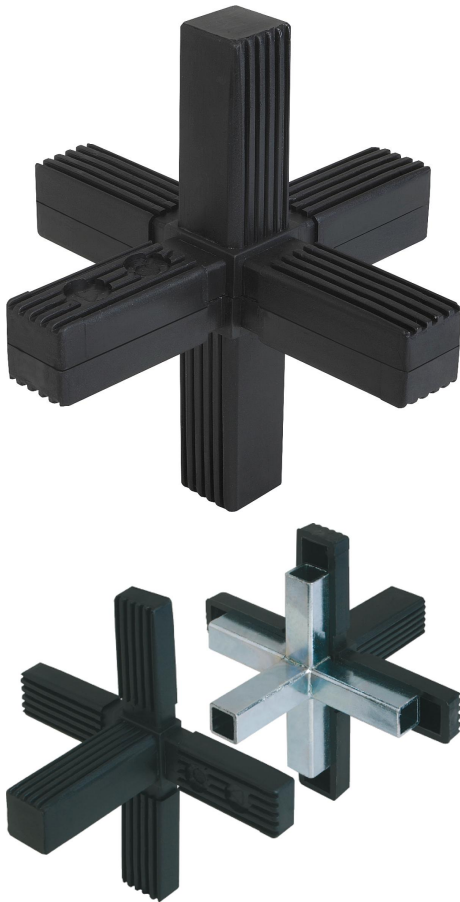


## Square tube connectors six-way

### Item description/product images



### Description

**Material, version:**

Polyamide PA, black.

Core electro zinc-plated steel.

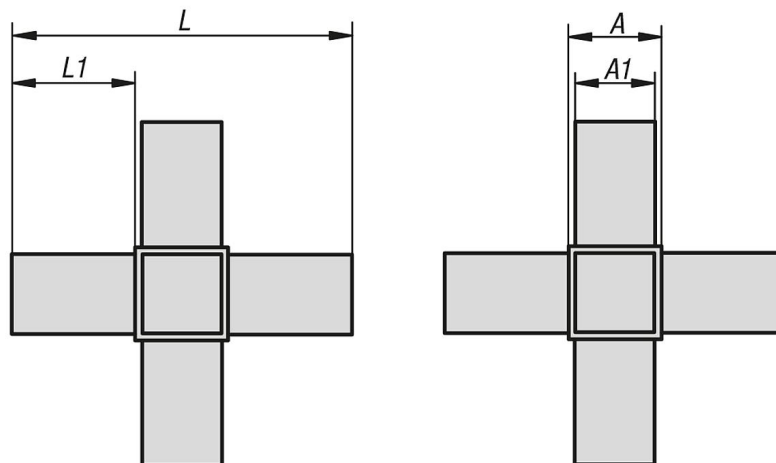
**Note:**

No screws required. The tube connectors are simply pushed into the appropriate square tubing. They can be dismantled and reused repeatedly.

**Accessory:**

- Square tubes K0627
- Finned square tubes K0628

### Drawings



### Overview of items

#### Square tube connectors, six-way

Order No.	A	A1	L	L1	Suitable for square tubes
K0622.1201512	20	17	92	36	20 x 20 x 1,5
K0622.1251512	25	22	129	52	25 x 25 x 1,5

## Square tube connectors six-way

### Overview of items

Order No.	A	A1	L	L1	Suitable for square tubes
K0622.1302012	30	26	124	47	30 x 30 x 2