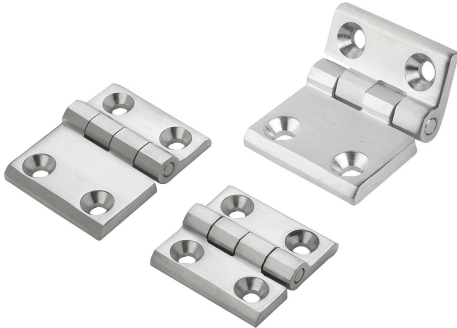


## Hinges stainless steel

### Item description/product images



### Description

**Material:**

Stainless steel 1.4401.

**Version:**

Satin finished.

**Note:**

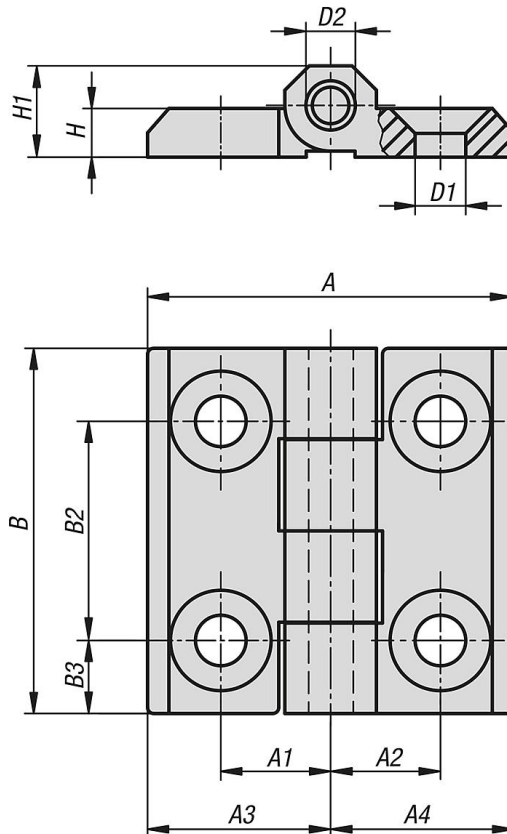
Hinge for extreme loads.

For right or left use.

Opening angle 270°.

Fastening with countersunk screws i.e. per DIN 7991.

### Drawings



### Overview of items

#### Hinges, stainless steel

Order No.	A	A1	A2	A3	A4	B	B2	B3	D1	D2	H	H1	Load capacity N
K1341.05201313	40	12,5	12,5	20	20	40	25	7,5	5,2	4	5	9	2500
K1341.06251515	50	15	15	25	25	50	30	10	6,2	6	6	11,5	5000
K1341.08301818	60	18	18	30	30	60	36	12	8,3	8	8	15	8000

## Hinges stainless steel

### Overview of items

Order No.	A	A1	A2	A3	A4	B	B2	B3	D1	D2	H	H1	Load capacity N
K1341.06381528	63	28	15	38	25	50	30	10	6,5	6	6	11,5	5000
K1341.06382828	76	28	28	38	38	50	30	10	6,5	6	6	11,5	5000